

ROSS NICHOLSON  
Architectural Lighting  
Luminaire Design





INTERIOR LIGHTING DESIGN



Place Fleur de Lys, Quebec\*



Barrhaven United Church\*

Interest  
Function  
Comfort



Via Rail Ottawa Station\*



The Carriage House, Stanstead QC



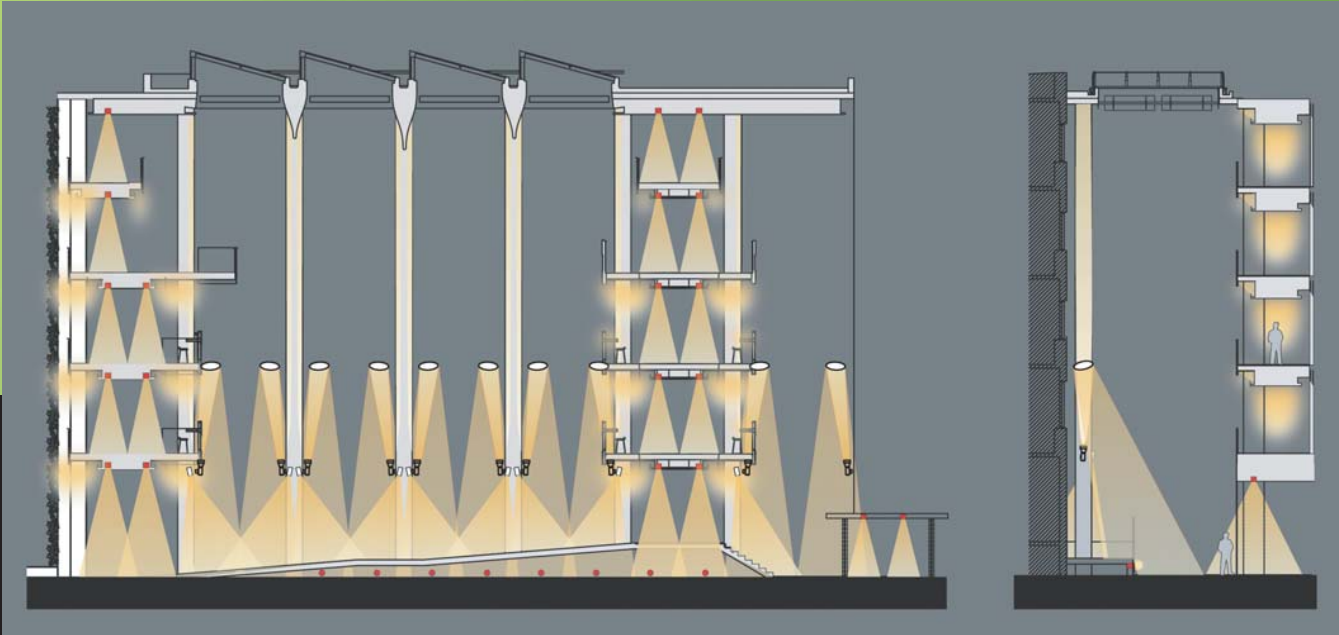
Les Promenades St-Bruno, St-Bruno QC\*



Place Bell Canada,  
Ottawa\*



Fluorescent Fixture Designs



Social Sciences Building, University Of Ottawa- Concept Drawing

\*as Sr. Designer w/ Gabriel/design



# EXTERIOR LIGHTING DESIGN



University of Ottawa, Tabaret Hall & custom nodal fixture\*



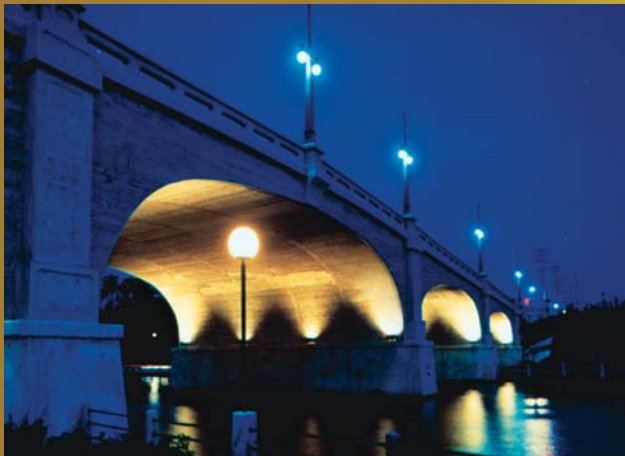
Respect for  
Architecture  
Context  
Sense of Place



Canadian Museum of Civilization,  
Gatineau QC



National Library of Canada, Ottawa\*



Bank Street Bridge, Ottawa & custom fixture detail\*



Canadian Museum of Civilization, IES International Award of Excellence 2007



National Defense HQ,  
IES International Award of Merit, 2009



University of Ottawa Arts Buliding\*



Parliament of Canada East block showing effect of custom pedestrian/floodlight fixture\*



\*as Sr. Designer w/ Gabriel/design



# MASTER LIGHTING PLANS

QUEEN'S UNIVERSITY\*

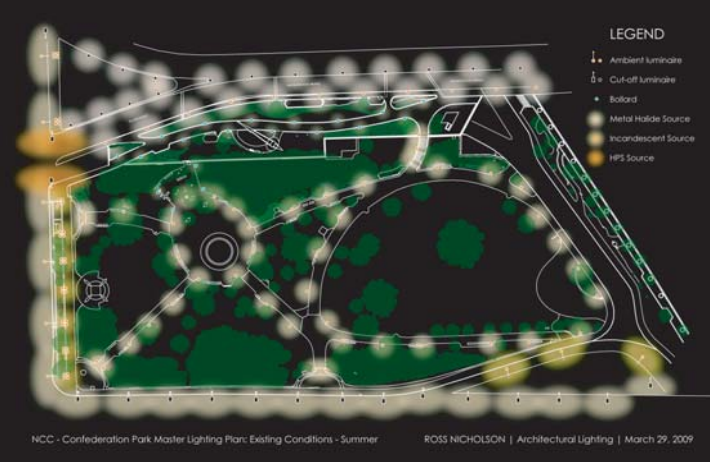


Primary Circulation with  
Thresholds and Vistas



Circulation Study

Wayfinding  
Safety  
Comfort



Confederation Park  
Master Lighting Plan



Secondary Circulation



Master Plan Drawing

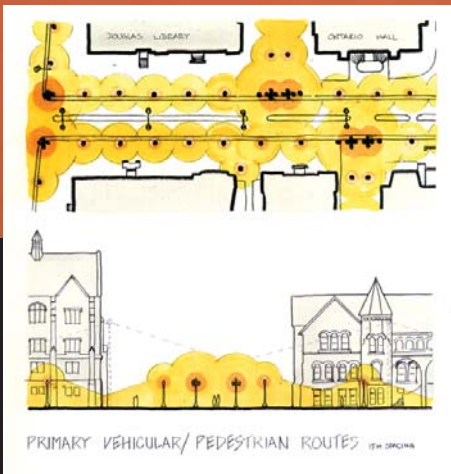


University Of Ottawa  
Master Lighting Plan\*

Carleton University  
Master Lighting Plan  
(w/ coCreations)



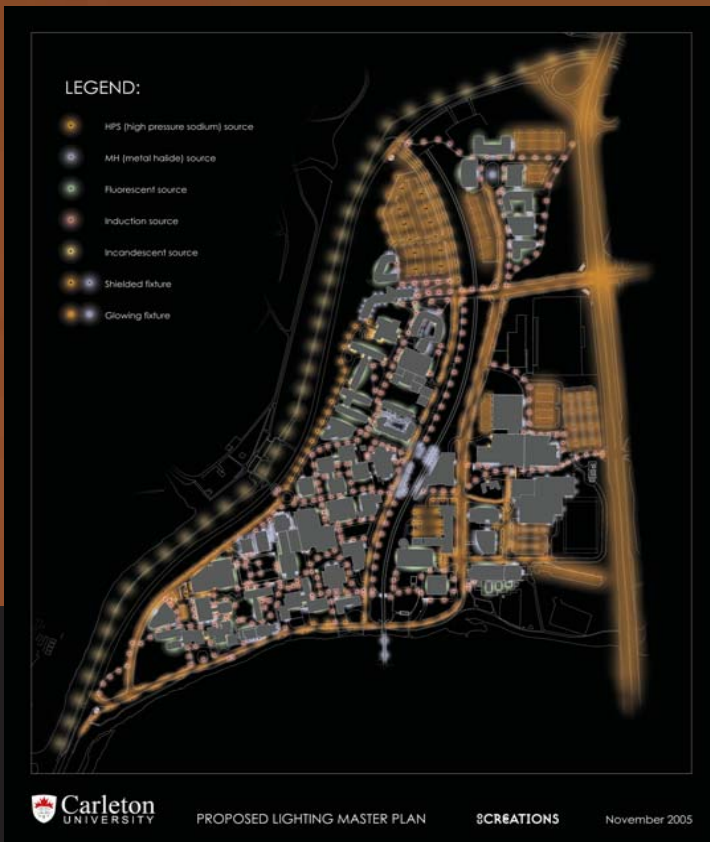
Respect for Urban and Historical Context



Node Detail Study



University Of Ottawa  
Circulation Study\*



\*as Sr. Designer w/ Gabriel/design



MUSEUM EXHIBIT LIGHTING

Interest  
Comfort  
Conservation



Canadian Museum of Civilization  
First Peoples Hall



Canadian Museum of Contemporary Photography  
(as Sr. Designer w/ Gabriel/design)



Canadian Museum of Civilization, Her Majesty's Stamps



Canadian Museum of Civilization  
Canadian Personalities Hall



Canadian Museum of Civilization  
The Treasures of Beijing



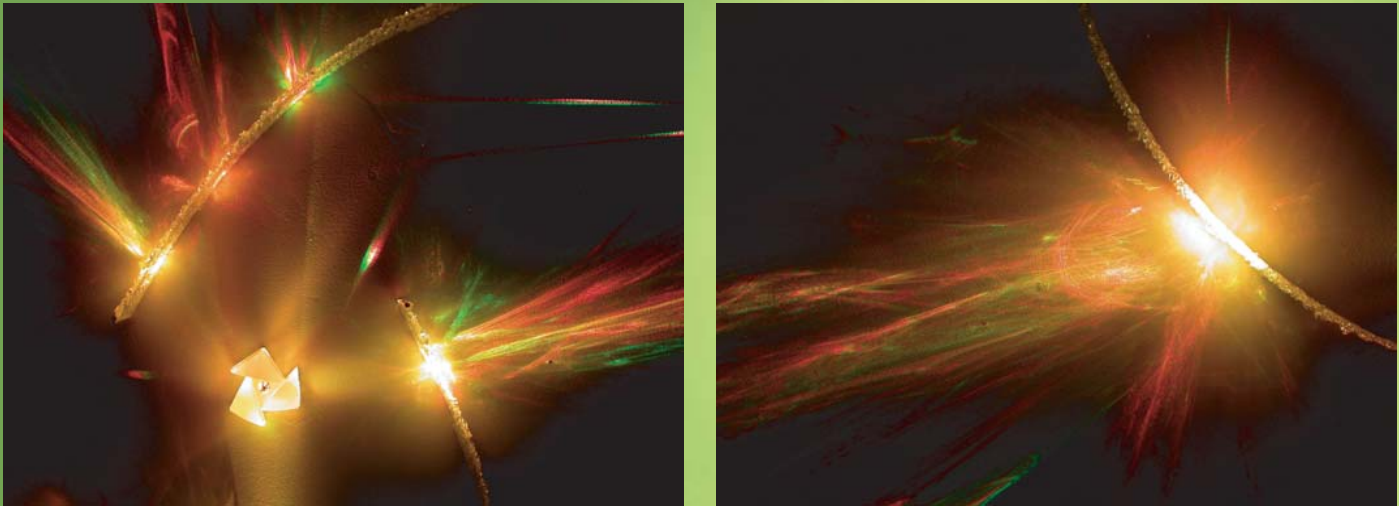
Canadian War Museum  
Hall of Honour



Canadian Museum of Civilization  
Inuvialuit of the Western Arctic



PHOTONIC SCULPTURE / LIGHT ART



Psyklone: Candela 2008- People's Choice Award



Reaktor: Candela 2008, Ottawa

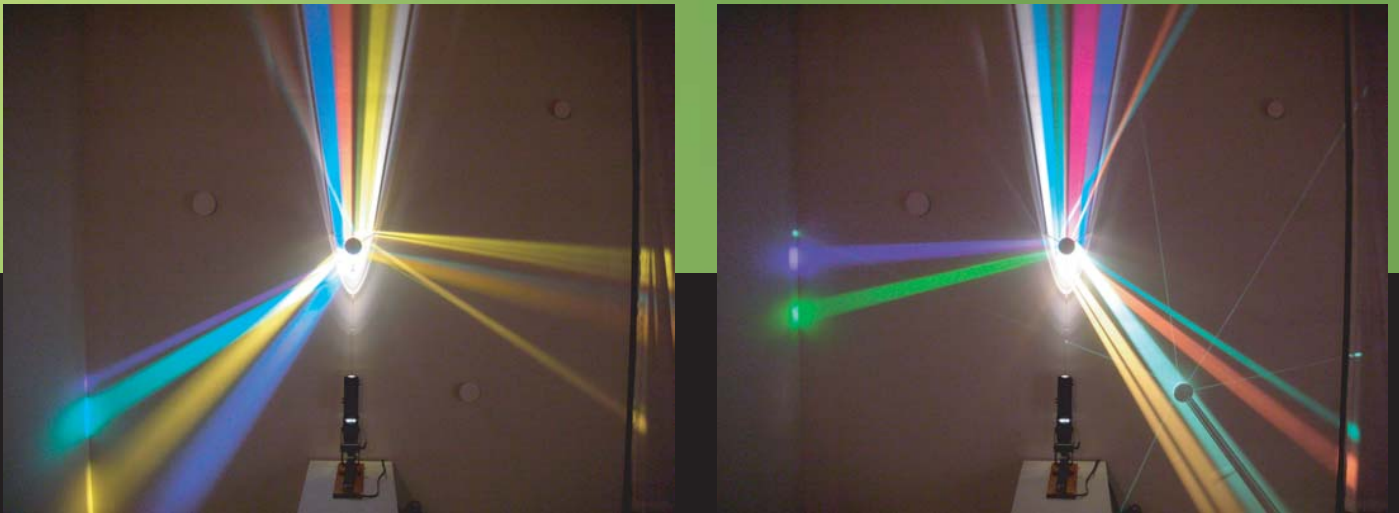


Five Pieces for Light Entertainment:  
LightFair 2007, New York, IIDEX 2007, Toronto  
(for Philips' Transitions: Light on the Move, w/ Philip Gabriel)



Kalioppe: Candela 2007, Ottawa; Lumiere Festival 2007, Ottawa

Imagination  
Experimentation  
Dynamics



Kaleidoscope: Candela 2007, Ottawa - People's Choice Award

Why do you want  
ROSS NICHOLSON ARCHITECTURAL LIGHTING  
on your team?

What produces a successful lighting design? It starts with the client believing in the value of comprehensive lighting solutions. Proper lighting in most environments has the potential to improve the day-to-day quality of life of those using the space and consequently improving productivity. It enhances architectural attributes as well as mobility in the working space, without incurring great costs. In order to achieve this type of balance, the process must involve people who have the necessary expertise in the relevant disciplines:

- The essential principles of composition, rhythm, texture and colour, as well as the formal vocabulary of architecture
- The nature of the human eye and its function, perceptual nuances and how the eye responds to the attributes and application of various light sources
- Principles of way-finding semantics such as vista termination, circulation hierarchy and node indication
- An understanding of the electrical issues at play and the ability to work cooperatively with electrical engineers
- The expert knowledge of how light fixtures work, how they are manufactured, and the many nuances of luminaire and optical design
- The issues that facilities and service people have to deal with and the realities of lighting maintenance

These are the basic considerations, but what else can ROSS NICHOLSON ARCHITECTURAL LIGHTING bring to the job?

Vision and creativity — fresh innovative ideas that utilize the appropriate technology for the context

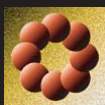
Experience/record — a proven track record since 1990 in delivering superior, award winning concepts to reality on budget

Detail — big concepts can fall short if insufficient attention is paid to critical details. Qualified follow-through in the shop drawing and construction stages of the process ensure that concepts remain viable, even when surprises arise in site conditions or from any miscommunication between trades

Team player — the other team members have ideas about lighting too, often very good ones. It's also about listening

Education — Ross Nicholson brings a relevant academic background to years of experience: a Master's in Architecture; a Bachelor of Industrial Design; and three years of electrical engineering at the university level

ROSS NICHOLSON ARCHITECTURAL LIGHTING can help your team with ideas that are innovative, effective, executable and maintainable.



ROSS NICHOLSON  
25 Rongail Street, Ottawa  
Ontario Canada K2G 0K6

Architectural Lighting  
613 - 224 - 5600  
613 - 723 - 2606

Luminaire Design  
ross.nicholson@rogers.com  
www.rossnicholson.com